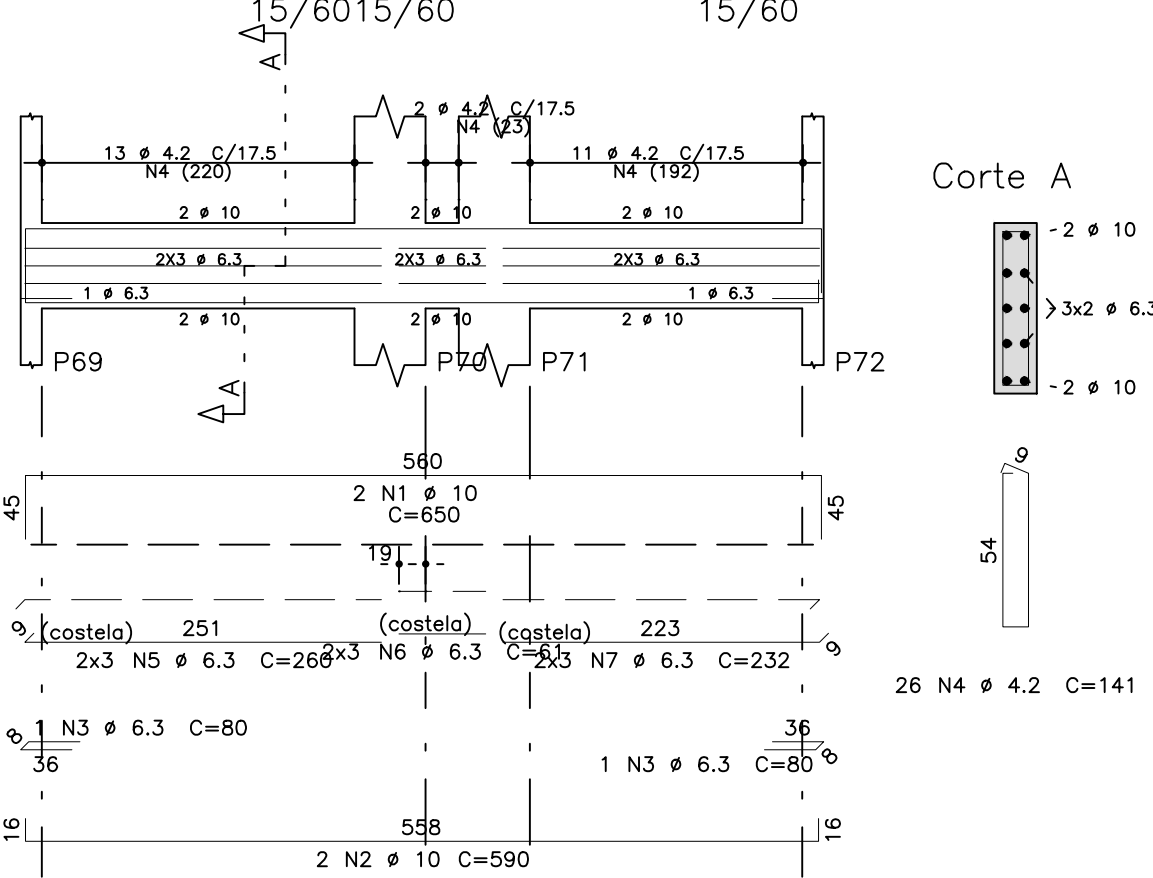
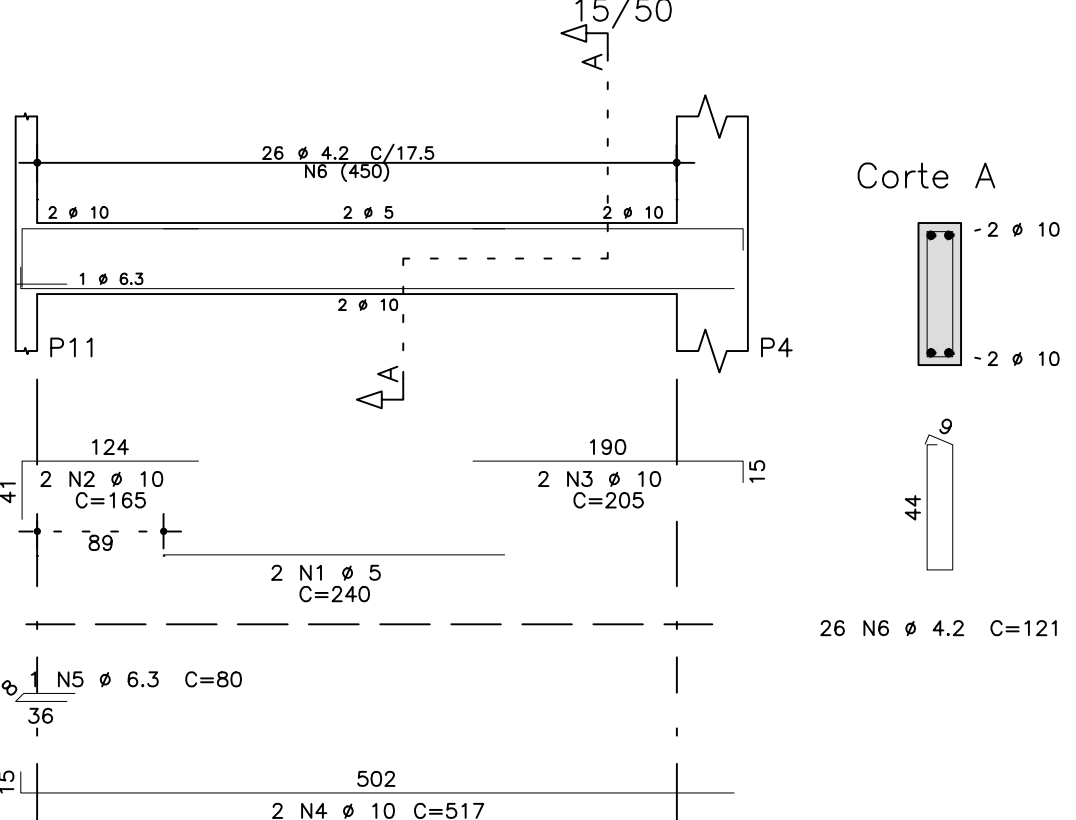


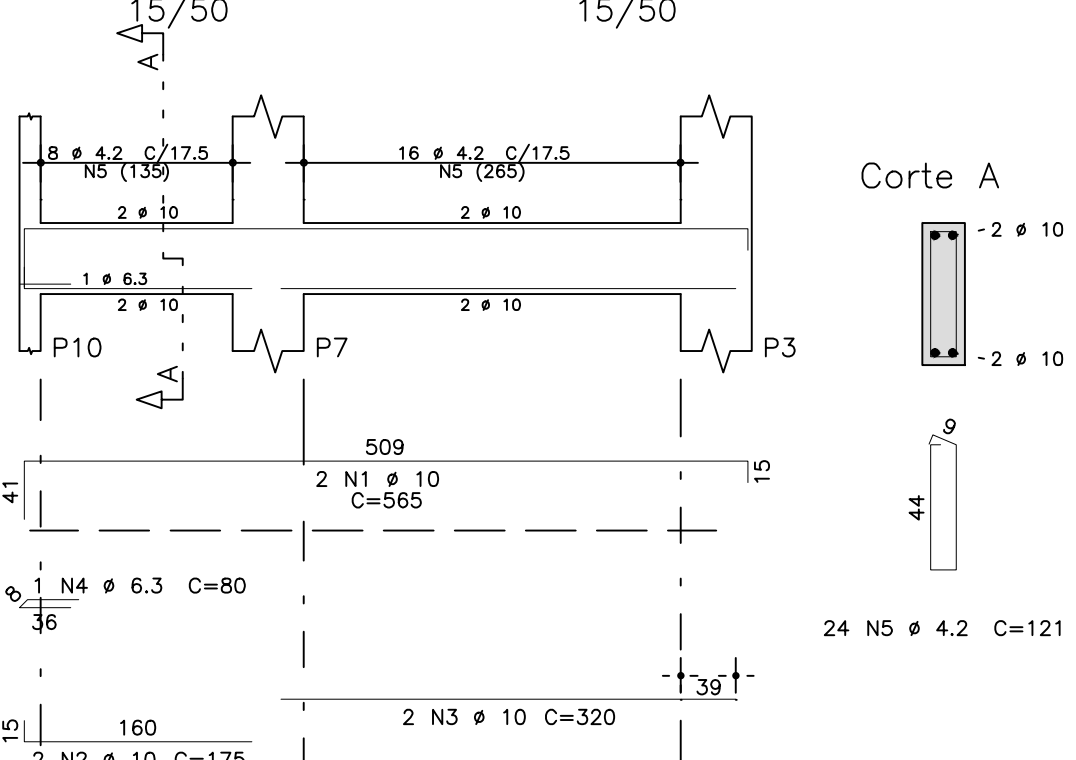
V118 15/6015/60 15/60



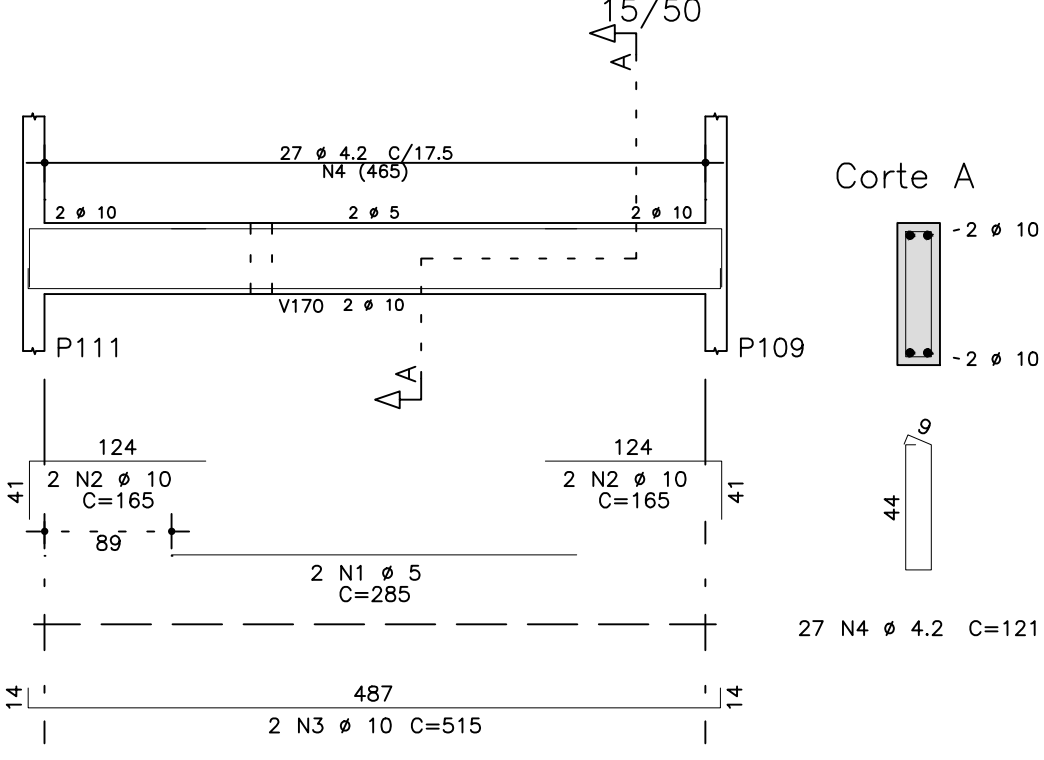
V154



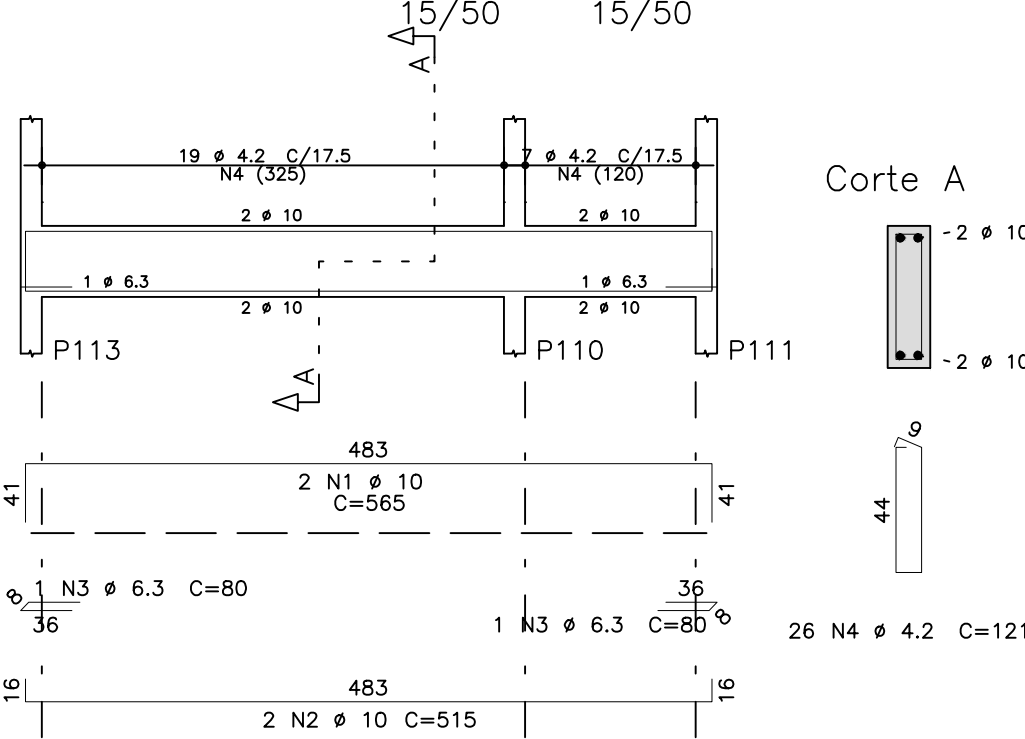
V151 15/50 15/50



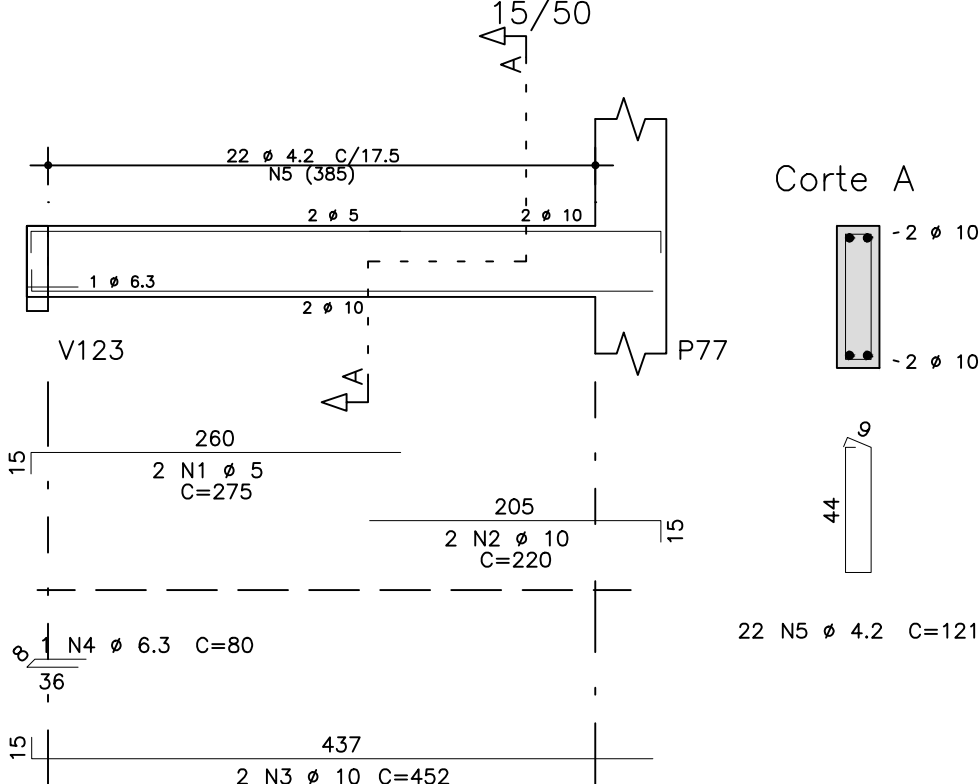
V130



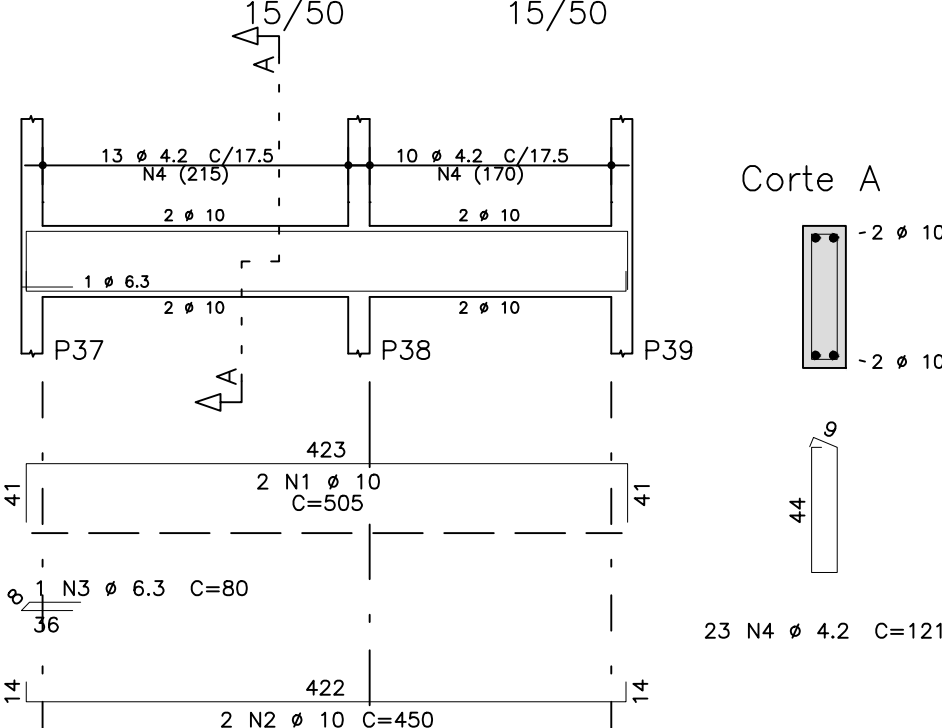
V131 15/50 15/50



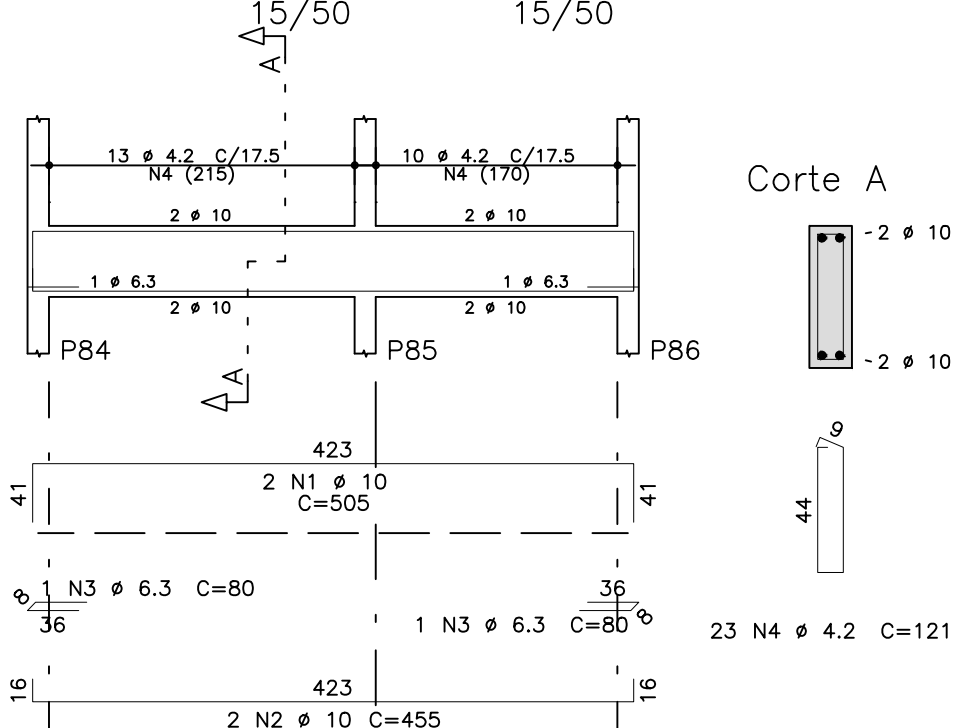
V162



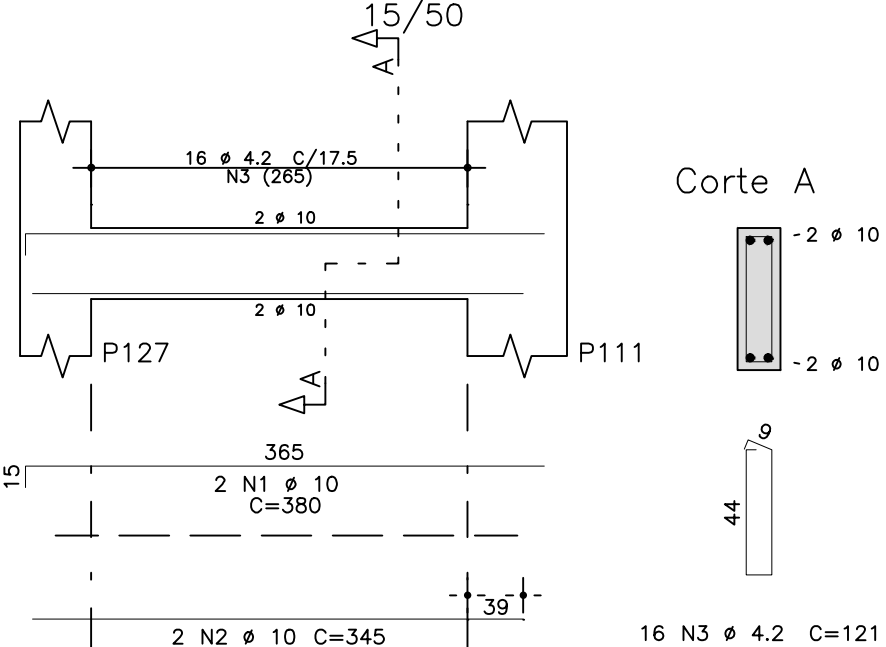
V109



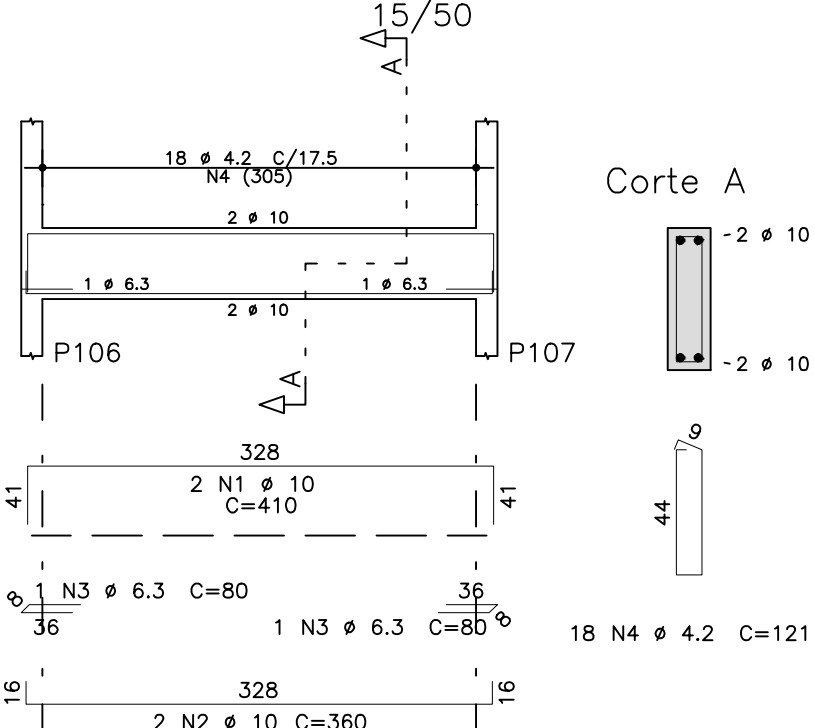
V124



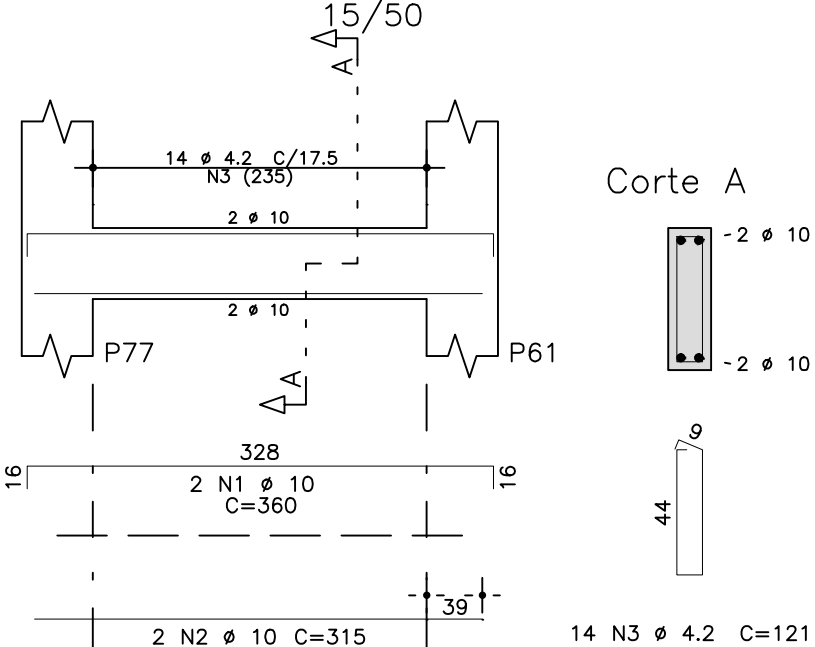
V168



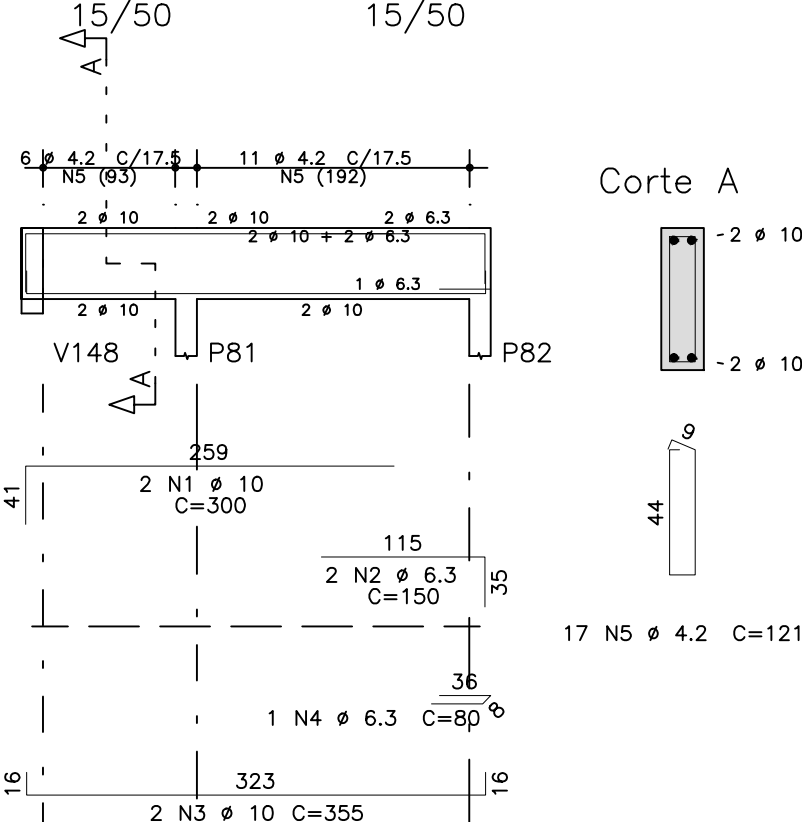
V128



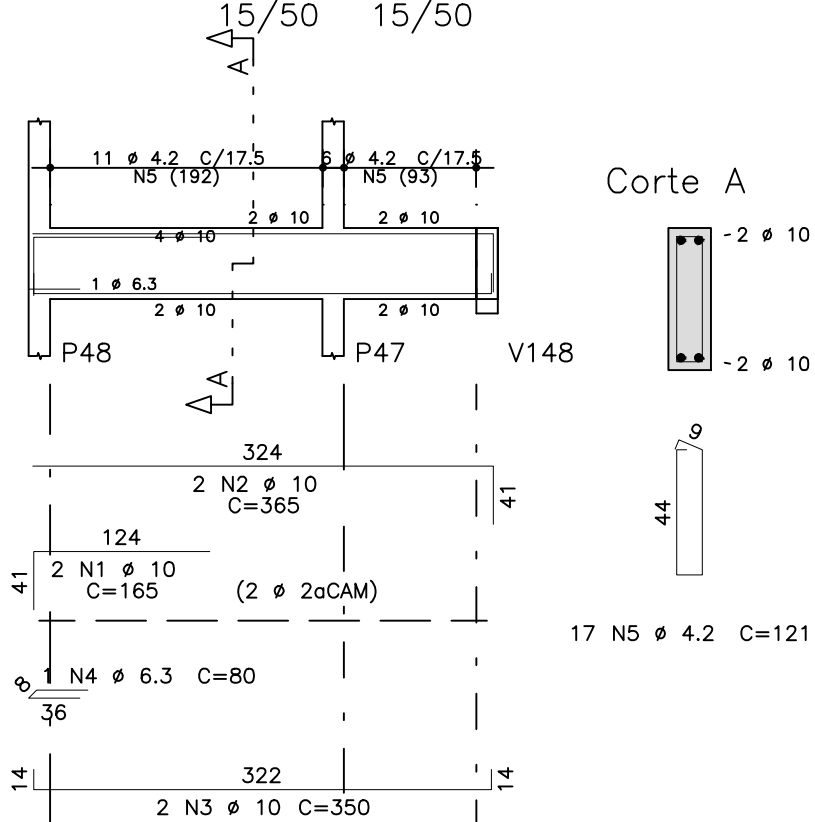
V163



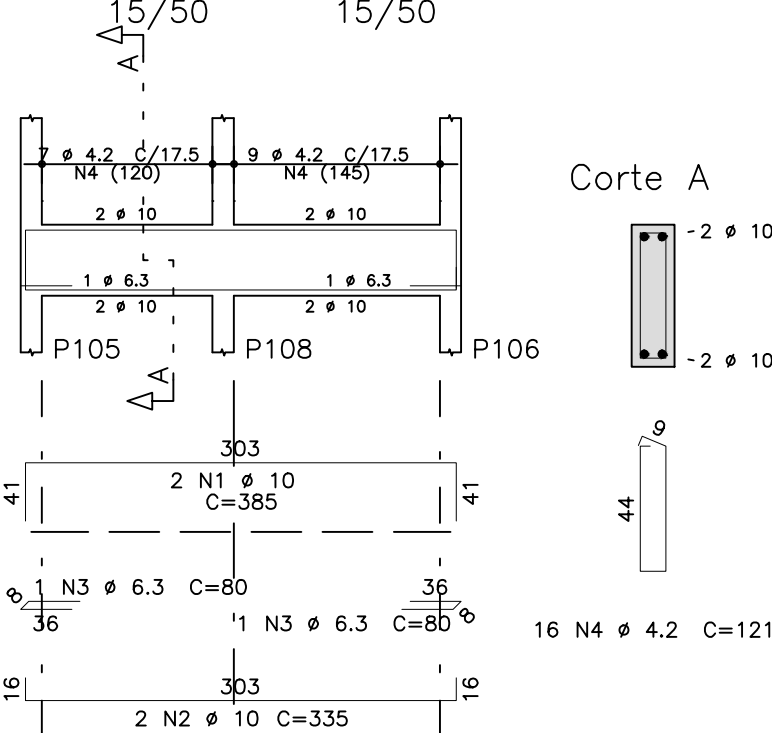
V121



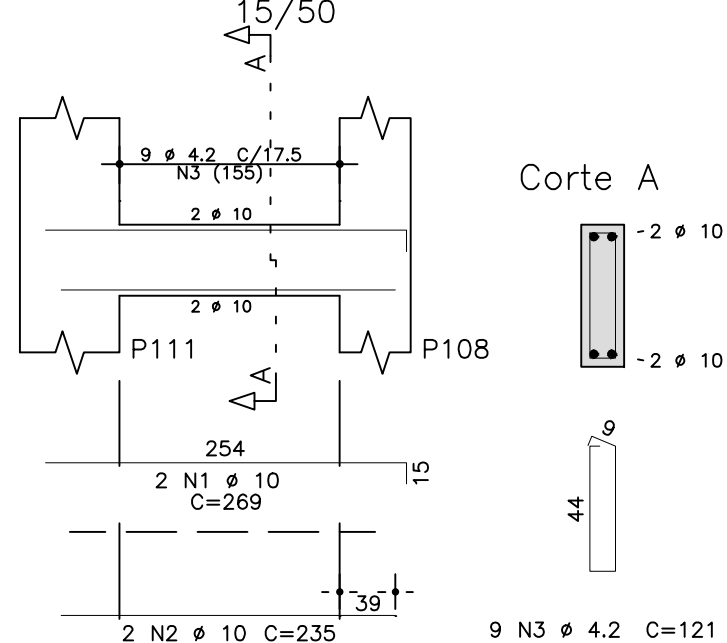
V114



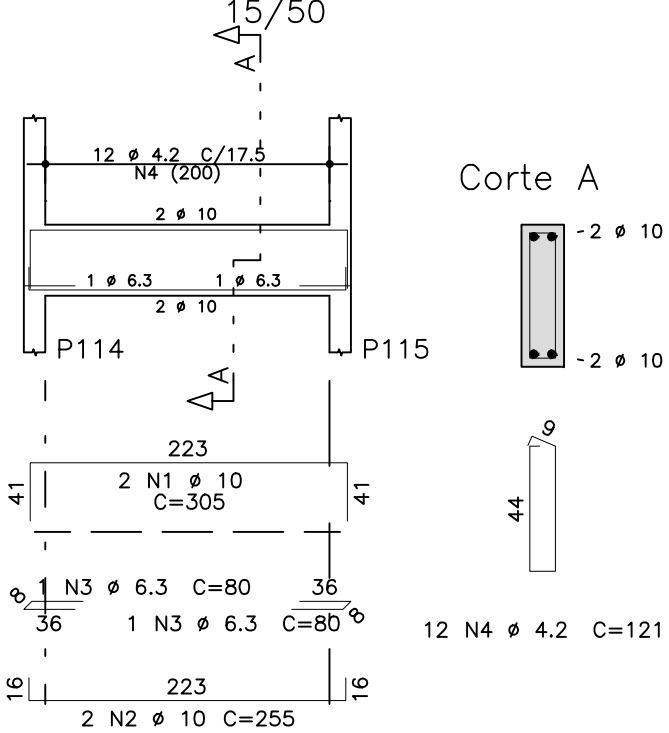
V129 15/50 15/50



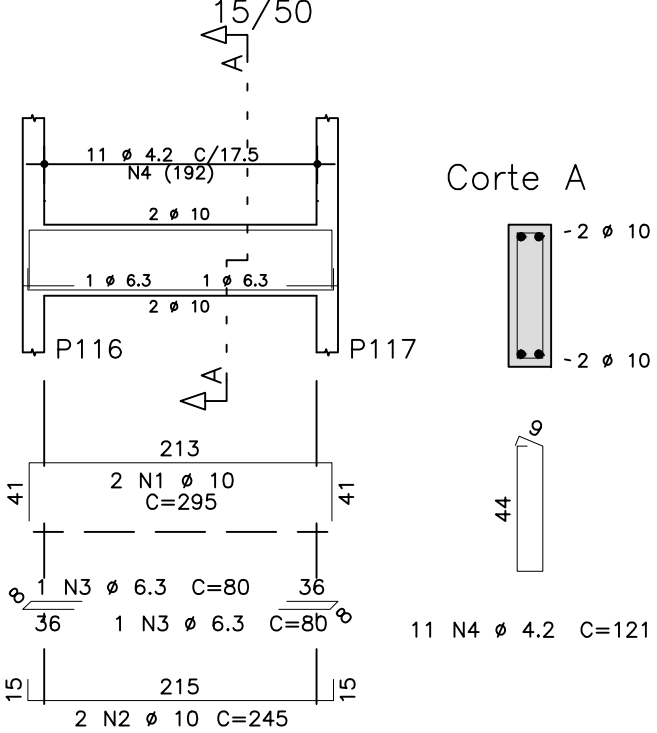
V169



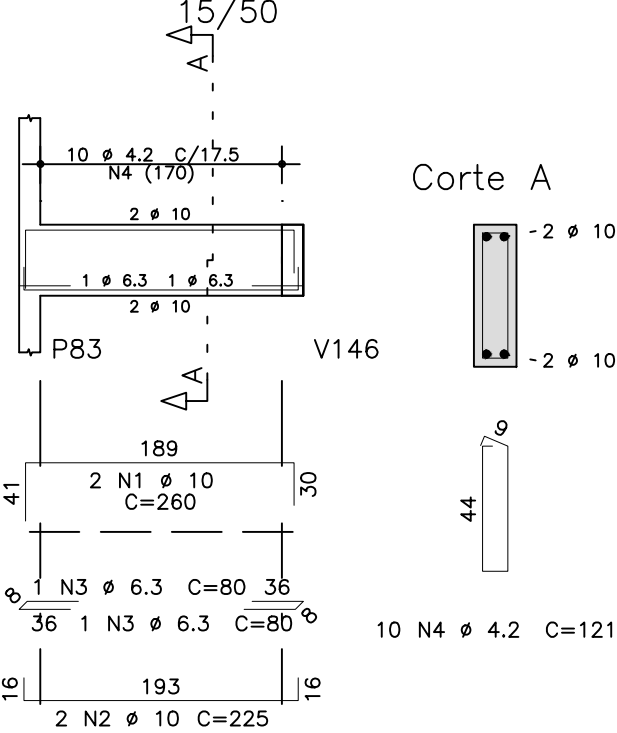
V132



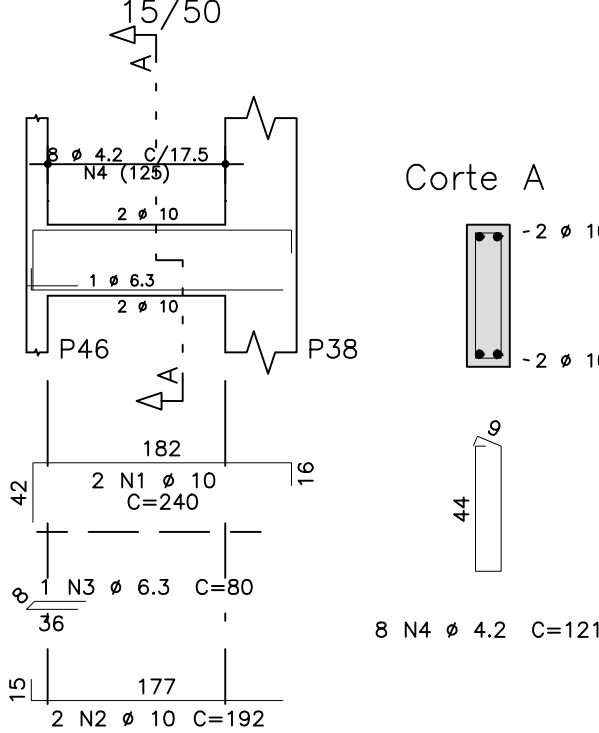
V133



V120



V145



AÇO	POS	BIT (mm)	QUANT	COMPRIMENTO UNIT (cm)	TOTAL (cm)
V109	50A	1	10	2	505
	50A	2	10	2	900
	50A	3	6.3	1	80
	60B	4	4.2	23	121
V114	50A	1	10	2	165
	50A	2	10	2	365
	50A	3	10	2	350
	50A	4	6.3	1	80
	60B	5	4.2	17	121
V118	50A	1	10	2	650
	50A	2	10	2	590
	50A	3	6.3	2	80
	60B	4	4.2	26	141
	50A	5	6.3	6	260
	50A	6	6.3	6	61
	50A	7	6.3	6	232
V120	50A	1	10	2	520
	50A	2	10	2	225
	50A	3	6.3	2	80
	60B	4	4.2	10	121
V121	50A	1	10	2	300
	50A	2	6.3	2	150
	50A	3	10	2	355
	50A	4	6.3	1	80
	60B	5	4.2	17	121
V124	50A	1	10	2	505
	50A	2	10	2	455
	50A	3	6.3	2	80
	60B	4	4.2	23	121
V128	50A	1	10	2	820
	50A	2	10	2	360
	50A	3	6.3	2	80
	60B	4	4.2	18	121
V129	50A	1	10	2	385
	50A	2	10	2	335
	50A	3	6.3	2	80
	60B	4	4.2	16	121
V130	60B	1	5	2	570
	50A	2	10	4	165
	50A	3	10	2	1030
	60B	4	4.2	27	121
V131	50A	1	10	2	565
	50A	2	10	2	515
	50A	3	6.3	2	160
	60B	4	4.2	26	121
V132	50A	1	10	2	305
	50A	2	10	2	255
	50A	3	6.3	2	80
	60B	4	4.2	12	121
V133	50A	1	10	2	295
	50A	2	10	2	245
	50A	3	6.3	2	80
	60B	4	4.2	11	121
V145	50A	1	10	2	240
	50A	2	10	2	192
	50A	3	6.3	1	80
	60B	4	4.2	8	121
V151	50A	1	10	2	565
	50A	2	10	2	175
	50A	3	10	2	320
	50A	4	6.3	1	80
	60B	5	4.2	24	121
V154	60B	1	5	2	240
	50A	2	10	2	165
	50A	3	10	2	205
	50A	4	10	2	517
	50A	5	6.3	1	80
	60B	6	4.2	26	121
V162	60B	1	5	2	275
	50A	2	10	2	220
	50A	3	10	2	452
	50A	4	6.3	1	80
	60B	5	4.2	22	121
V163	50A	1	10	2	360
	50A	2	10	2	315
	60B	3	4.2	14	121
V168	50A	1	10	2	380
	50A	2	10	2	690
	60B	3	4.2	16	121
V169	50A	1	10	2	269
	50A	2	10	2	235
	60B	3	4.2	9	121

AÇO	BIT (mm)	COMPR (m)	PESO (kg)
60B	4.2	423	46
60B	5	16	2
50A	6.3	55	13
50A	10	293	181
Peso Total 60B =			49 kg
Peso Total 50A =			194 kg

fck 250. kg/cm2

		Schuring & Schuring Ltda. Escritório Técnico B.E.SCHURING - Projetos de Engenharia Av. XV de Novembro, 489 - Porto 2o. Andar - Curitiba MT Fone:(065) 321.8959 - Fax:(065) 623.5066 - E-mail: - schuring@terra.com.br	
PROJETO:	PROPRIETÁRIO:	OBRA:	
PREFEITURA MUNICIPAL	VARZEA GRANDE MT	EMEB ALINO FERREIRA MAGALHAES	
RESP. TEC. EXECUCÃO:			
AUTORES DO PROJETO:	ASSUNTO:	DET LIGAS BALDRAME	
BENEDITO ELISEU SCHURING Eng.Civil - CREA 715/D-MT		ANDRE LUIZ SCHURING Eng.Civil - CREA 8697/D-MT	
PREÇOS DETALHADA V109 / V114 / V118 / V120 / V121 / V124 V128 / V129 / V130 / V131 / V132 / V133 V145 / V151 / V154 / V162 / V163 / V168 V169		OFERTAS AUTOMÁTICAS RESERVADAS VERIFICAR MEDIDAS NA OBRA DATA:	
FOLHA Nº. 34			